

CS612 | 6-axis Collaborative Robot

CS SERIES



12kg
Payload



1304mm
Radius



± 0.05 mm
Repeatability



3.4m/s
Max TCP Speed

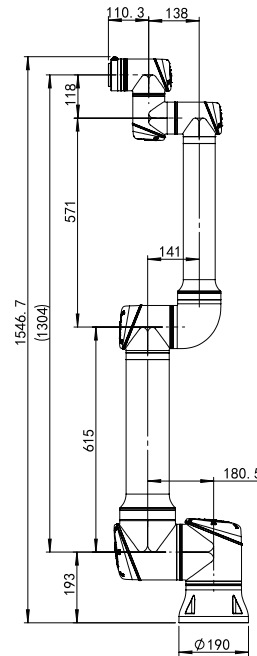
CS612

CS SERIES

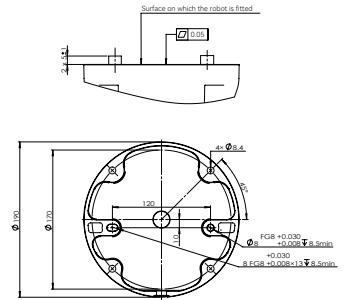


Robotic Arm

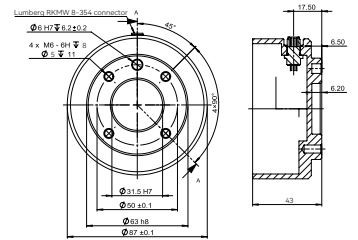
| | |
|-----------------------------|--|
| Payload | 12kg |
| Radius | 1304mm |
| Repeatability | ±0.05mm |
| Axis | 6 |
| Joints rotation J1-J6 | ±360° |
| Joints speed J1-J2 | 120°/s |
| Joints speed J3 | 150°/s |
| Joints speed J4-J6 | 180°/s |
| Max TCP Speed | 3.4m/s |
| IP rating | IP65 (IP68 upgradable) |
| Operating Temperature range | 0-50 °C |
| Relative humidity | <90% (non-condensing) |
| Typical power usage | 435w |
| Mounting | Any angle |
| Tool I/O connectors | M8, 8pin |
| Tool I/O ports | 4 config. DI, 4 config. DO; 1 AI, 1 AO |
| Tool I/O power supply | 12V / 24V, 3A, 2A, 1A |
| Tool I/O communication | RS485 |
| Footprint | Ø190mm |
| Weight | 34kg |
| Material | Aluminum, Steel |
| Cable length | 5.5m |
| Certifications | EN ISO 13849-1, PLd Category 3, EN ISO 10218-1 |



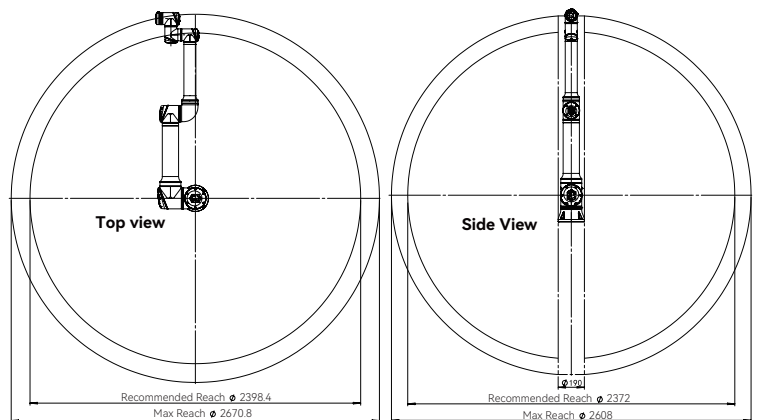
CS612 external dimensional drawing



CS612 base top view



CS612 end flange



CS612 working range diagram

Teach-Pendant



| | |
|---------------------|-------------------------|
| Size | 301mm x 232mm x 54mm |
| Screen display size | 12.1" |
| Resolution | 1280 x 800 pixels |
| Material | Aluminum, Plastic |
| Weight | 2.1kg |
| Cable length | 5.5m |
| IP rating | IP54 |
| Input method | Capacitive touch-screen |

Controller



| | |
|-------------------------|---|
| Size | 505mm x 432mm x 257mm |
| Material | Aluminum, Steel |
| IP rating | IP54 |
| I/O ports | 24 DI (8 config.), 24 DO (8 config.); 2 AI, 2 AO |
| I/O power supply | 24V; 3A (internal), 6A (external) |
| Communication ports | 3 Ethernet ports, 1 RS485, 1 MiniDP, 1 USB 2.0, 1 USB 3.0 |
| Communication protocols | TCP/IP, MODBUS TCP/RTU, EtherNet/IP, Profinet, OPCUA |
| Power source | 100-240 VAC, 50-60 Hz |